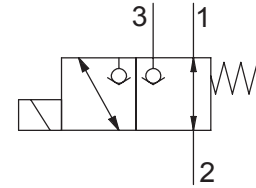


### 3 WAY 2 POSITION ELECTRIC POPPET VALVE, DIRECT ACTING

- Flow ..... 30 l/min
- Max working pressure in 3:2:1 ..... 350 bar
- Leakage ..... 0,25 cc/min
- Seals ..... NBR and PTFE
- Cartridge tightening torque ..... 40 Nm
- Ring nut tightening torque ..... 5 Nm
- Weight (with coil) ..... 0,56 Kg
- Cavity ..... C330000 page 220
- Body ..... 171312 page 192
- Coil (to be ordered separately) ..... 09800 page 180



**Note:** proportional coil 09800 applied to provide the operating needed power (ED 50%).  
For ED 100% contact NEM customer care service.

